

# THE LOTUS LEAFLET

## PI ALPHA XI

*The National Honor Society for Horticulture*



### FALL 2023

*In this issue:*

Letter from the President.....	2
PAX 2023 Photo Contest .....	3-10
Chapter Happenings.....	11-18
\$100 for 100 <sup>th</sup> Endowment.....	19
Horticulture Judging Manual.....	20
2023 PAX Fellow .....	21
PAX Fellows History.....	22
PAX Minutes Annual Meeting....	22-24
PAX Financial Report.....	25-26

### NATIONAL PAX OFFICERS:

**2022-2024**

**Mark Bridgen, President**  
**Chad Miller, Vice President**  
**Cole Etheredge, Secretary**  
**Ryan Contreras, Past President**

Chapter dues of \$50 are due in January each year. Payments can be made online via ASHS Website ([www.ashs.org/store](http://www.ashs.org/store)) or a check can be made out to the order of and sent to:

PAX  
c/o ASHS  
Attn: Angie Lower  
1018 Duke Street  
Alexandria, VA 22314

The mission of Pi Alpha Xi is to promote high scholarship, fellowship, professional leadership and the enrichment of human life through plants.



## Letter from President Mark Bridgen December 2023

This year, Pi Alpha Xi celebrates its 100<sup>th</sup> anniversary! Pi Alpha Xi began with the installation of its first chapter, the Alpha Chapter, back on June 1, 1923, at Cornell University. Since then, we have expanded to 42 chapters.

At this momentous time in history, it is appropriate to remind ourselves about the purpose of our Society:

To promote high scholarship, to foster good fellowship among its members, to raise the visibility of the profession, to promote the exchange of ideas, and to establish cordial relations among students, educators, and professional horticulturists and plant scientists. In summary, we are here to enrich human life through plants.

This year, in special recognition of our 100<sup>th</sup> anniversary, and after several years of discussion and planning, PAX has established the *Pi Alpha Xi National Endowment*. The objective of this Endowment is to provide financial support to undergraduate and graduate students who are active members of Pi Alpha Xi. Students in all active chapters are eligible to apply.

The endowment has been perpetually invested and only the income that is generated from these investments will be used. By using the income from a sustained endowed fund, Pi Alpha Xi National can make a long-term commitment to students. Activities that are supported by the Fund include travel to the annual ASHS Annual Conference, travel to attend PAX activities, participation in educational events, registration fees for appropriate events or activities, or financial support to continue advancing in the student's academic career (books, food, rent, tuition, etc. are acceptable).



If applicants are not sure if their request is appropriate, the PAX Endowment Selection Committee can be contacted to determine if requests are appropriate. Special thanks goes to Ellen Paparozzi for leading the effort to get this endowment established.

This year, we inducted Dr. Mary Albright (Zeta 166) as a Fellow in PAX. The Fellow's Award is given to Pi Alpha Xi members who have achieved marked service or excellence in the field of Horticulture and/or who have distinguished themselves with meritorious service to Pi Alpha Xi. Mary truly deserves this award for her hard work and dedication to our organization both nationally and in her local chapter.

Now that we have reached the landmark age of 100 years, we cannot get complacent. We still have a lot of work to do to keep Pi Alpha Xi alive and vibrant. If you have ideas or suggestions, please feel free to email me at [mpb27@cornell.edu](mailto:mpb27@cornell.edu) or text/call 631-921-4941.

Thank you, and stay well,  
Mark Bridgen, Alpha Chapter

# 2023 Paul Thomas Pi Alpha Xi Photography Contest Summary

The 2023 Paul Thomas Pi Alpha Xi Photography Contest accepted photo submissions from March 31, 2023 to June 30, 2023. Thirty two submissions across the following categories were received: Perfect Partners, Pi Alpha Xi 100<sup>th</sup> Anniversary, Garden Visitors, Flowering Plants with an Attitude!, Serendipity, Horticulture in Production, Photomicography, and Altered Images.

Photos were submitted in all categories except photomicography. Thank you to everyone who submitted photos this year and we look forward to entries for the 2024 contest! Following are the winning entries for the 2023 contest. Submitted by Sonja Maki.

**Perfect Partners.** These images represent what the photographer believes to be outstanding plant combinations. These can be container, bed or floral design compositions. The images should show clearly how two plant partners are being used.



### First Place

**Title:** Purple Coneflowers

**Caption:** Echinacea Echo

**Photographer:** Robert E. Lyons, Univ. of Delaware

### Second Place

**Title:** *Uniola paniculata* (sea oats) and *Coccoloba uvifera* (seagrape) Bordering a Parking Lot Near the Atlantic Ocean.

**Caption:** Two if by Sea by the Sea by the Sea

**Photographer:** Richelle A. Stafne



### Third Place

**Title:** Flamethrower Redbud Foliage

**Caption:**

**Photographer:** Robert E. Lyons,



**Pi Alpha Xi 100<sup>th</sup> Anniversary.** Images that exemplify the mission of Pi Alpha Xi: to promote scholarship, fellowship, professional leadership, and the enrichment of human life through plants. Examples of appropriate photo submissions would include PAX Plant sales, research, field days, group activities, teaching, etc.

**First Place**

**Title:** Cacao Hands

**Caption:** Students from University of Wisconsin-River Falls visit Puerto Rico to learn about tropical plants including 'Cacao' (*Theobroma cacao* L.). Here, they are displaying Cocoa pods ready to be processed for chocolate and other products.

**Photographer:** Yoana Newman, University of



**Second Place**

**Title:** Pineapple for All!

**Caption:** Pineapple Diversity. Students at University of Wisconsin-River Falls visit producer field in Puerto Rico and learn first hand all about producing pineapples (from planting, to pests, varieties, and market).

**Photographer:** Yoana Newman, University of Wisconsin-River Falls



**Third Place**

**Title:** For Whom the Applicator (Bell) Tolls: Tree Predating US Civil War Suffers Slow Death From Herbicide Misapplication

**Caption:** This black oak predates the civil war and was severely injured by a misapplication of herbicide for invasive plant control. You can see the section in the foreground has been removed due to the death of that part of the tree. The section in the background is still in slow decline, four years after the front section was removed by cutting. It is anticipated that this tree will die in the next 3-4 years. With too many urban and forest fragment trees dying due to misapplication of herbicides by applicators who have an inappropriate understanding of how herbicides work in the plant and in the soil, this is what is left for us now but what will be left for future generations?

**Photographer:** Hannah Mary Mathers, Mathers Environmental Science Services, LLC

**Garden Visitors.** These images should include gardens, landscapes or plants sharing their space with people or insects. Examples include insects and pollinators, people or pets, or wildlife in the garden. Images that include people must include a model release form.

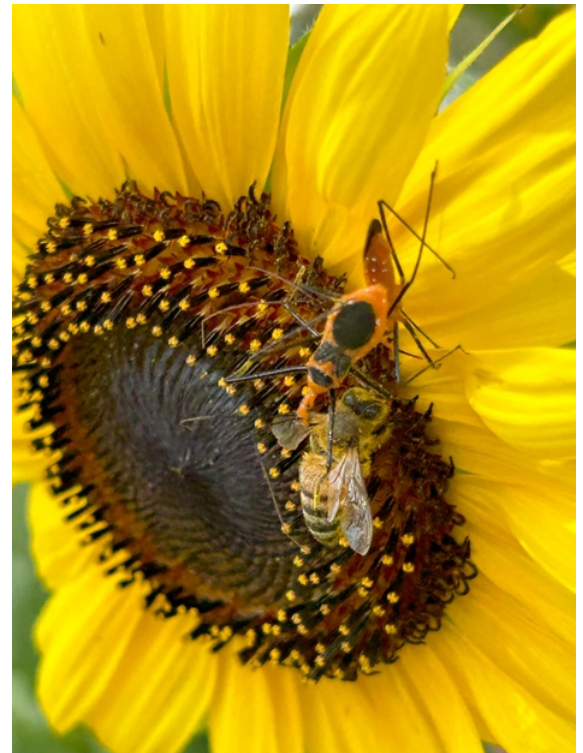


**First Place**

**Title:** Quercus spp. (southern Mississippi native oak seedling transplanted to home landscape in 1989) and Young Procyon Lotor (common racoon) in Picayune, MS

**Caption:** The Bark is Worse Than the Bite

**Photographer:** Richelle A. Stafne



**Title:** When the Garden Becomes "the Right Place at the Wrong Time."

**Caption:** Nature is not always nice.

**Photographer:** Dr. Kathryn Fontenot, Louisiana State Univ., LSU AgCenter



**Third Place:**

**Title:** Grandiose Tropical Forest

**Caption:** Inspired by Yunque tropical rainforest... depicted is recent UWRF horticulturalist graduate Shannon Murphy...reflecting on the past and future!

**Photographer:** Yoana Newman, Univ. of Wisconsin-River Falls

**Flowering Plants With Attitude.** We've all seen pansies growing out of sidewalk cracks, or native flowers growing on rock surfaces. This category is for any horticultural plant growing in an audacious, amazing or inconceivable way. Examples include extremely large plant specimens, huge colonies or a lone survivor clinging to life in some inhospitable place.

**First Place:**

**Title:** Flamboyant Magnolia

**Caption:** Wide open southern magnolia

**Photographer:** Robert E. Lyons, University of Delaware



**Second Place:**

**Title:** Windswept Sunflower

**Caption:** Giant sunflowers facing headwinds

**Photographer:** Robert E. Lyons, University of Delaware

**Third Place**

**Title:** Tiger Swallowtail

**Caption:** Swallowtail on Joe Eye Weed

**Photographer:** Robert E. Lyons, University of Delaware



**Serendipity.** Sometimes the perfect photography is by chance. This category is for that random shot that was unplanned but exemplifies horticulture.



**First Place**  
**Title:** Reflections

**Caption:** Early morning cup of coffee on the deck, turned and saw the guttation on the yellow walking iris [*Trimezia longifolia* (syn. *Neomarica lognifolia*)]. After taking the photo, I noticed the reflection of the foliage in the droplet. Truly a serendipitous find.

**Photographer:** Mary Lewnes Albrecht, Univ. of Tennessee



**Title:** Solomon's Seal after Rain

**Caption:** A close up of Solomon's Seal after a shower.

**Photographer:** Steven Newman, Newman Events and Consulting, LLC



**Third Place**  
**Title:** Guardian of the Shade

**Caption:** Majestic Rainbow Eucalyptus (*Eucalyptus deglupta*) used as a shade tree for growing coffee in Puerto Rico

**Photographer:** Yoana Newman, Univ. of Wisconsin-River Falls

**Horticulture in Production**-The images in this category represent the core of academic horticulture in action. These images can be from farms, greenhouses, or research plots such as might be used in classroom or extension presentations.

**First Place**

**Title:** Midsouth (Vitis hybrid) Harvest Morning at the Mississippi State University, McNeill Research Station.

**Caption:** Mid-summer Mid-morning Amid 'Midsouth' in McNeill, Mississippi

**Photographer:** Richelle A. Stafne



**Second Place**

**Title:** Between Red and Green with a Bit of Muck

**Caption:** A leafy vegetable field in the Everglades Agricultural Area in southern Florida.

**Photographer:**

Germán V Sandoya-Miranda, University of Florida EREC



**Third Place**

**Title:** One Stem. Four Colors. Abelia

**Caption:** Phenotyping new Abelia hybrids at the University of Georgia

**Photographer:** Leynar Leyton Naranjo, University of Georgia



**Altered Images.** Photographs manipulated for artistic purposes by applying digital and/or traditional special effects (i.e., stacking colorizing, toning, collage, photo composites, HDR, etc.).



**First Place**

**Title:** *Liriodendron Tulipifera* with Headstone in Sleepy Hollow, NY.

**Caption:** Ashes to Ashes, Dust to Dust

**Photographer:** Richelle A. Stafne

**Second Place**

**Title:** White Pine in the Bridgers

**Caption:** This is a stippled image of a white pine taken from the trail hiking down from the Sacagawea peak in the Bridger Mountains outside of Bozeman MT. This is a very old specimen found just above tree line. The view is looking east with Battle Ridge just coming into view.

**Photographer:**

Steven Newman, Newman Events and Consulting, LLC



## Best in Show

**Category:** Flowering Plants with Attitude!

**Title:** Flamboyant Magnolia

**Caption:** Wide open southern magnolia

**Photographer:** Robert E. Lyons, University of Delaware



The above photos can also be viewed on the Pi Alpha Xi National Webpage, hosted by ASHS. <http://www.pialphaxi.org/2023-photo-contest-results.html>

The submission process for the 2024 contest will open March 31, 2024 and close August 31, 2024. Contest categories and rules will be available on the photography link on the Pi Alpha Xi website.

## Chapter Happenings....



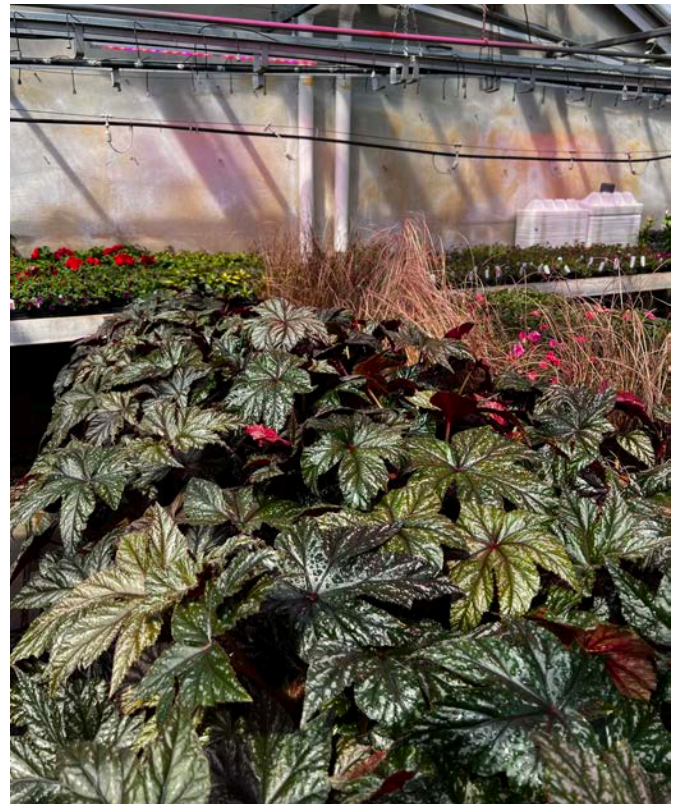
Newest **Omega Chapter** (Kansas State University) inductees. From left to right are Olalekan A. Sipasi, faculty Irina Sheshukova, Shea McAllister, Greta Berg, and Abigail Peterson. Photo courtesy of Kimberly Williams.



**Omega Chapter** Pi Alpha Xi member, Zachary Rosenkranz (r) being recognized by faculty advisor, Dr. Kimberly Williams, for his internship and scholarship achievements. Photo courtesy of Kimberly Williams.



The **Alpha Zeta Chapter (UWRF)** celebrated the 100-year PAX anniversary making buttons for members! Shown is chapter advisor, Dr. Sonja Maki with her button! Photo courtesy of Chad Miller



Photos of the 2023 **Alpha Zeta Chapter** plant sale fundraiser. Photos courtesy of Liz Malobicky





The **Alpha Zeta Chapter** (University of Wisconsin—River Falls) 2023 initiation celebration. New members denote with \* L to R. Front row: Dr. Zlesak, Madeline Boyer\*, Elayna Stirn\*, Graham Montee, SirrNay Ku, Emily Larsen, Dr. Maki. Back row: Ian Schneider, Liz Malobicky, Daphne Jacak\*, Grace Bourgeois\*, Ella Sutherland, Connor Tanck\*, Kelli Hough, Dylan Cooper\*, and Jacinda Goldsby\*. Photo courtesy of Liz Malobicky



**Beta Chapter** (University of Illinois Urbana-Champaign) 2023 initiation. Left to Right: Maja Wlodarczyk, Harrison Hall, Sydney Curts, Joe Ku, Maria Velazquez, Dr. Andrea Faber Taylor (chapter advisor), and Monica Zimmerman. Photo courtesy of Andrea Faber Taylor



Nathan Starr and Jacob Hillis (left) welcome new initiates, (l to r) Sam Berghuis, Thomas Henry, Willis Hanneman, Elaina Madison, Ridge Gersberger, Katrina Webster, and Emma Kuss into the Pi Alpha Xi Alpha Gamma Chapter.



Jacob Hills, 2022-23 PAX-Alpha Gamma president, passing the gavel to the 23-24 president, Elaina Madison.

The **Alpha-Gamma** chapter (University of Nebraska-Lincoln) celebrates the 100-year anniversary of PAX national with a Nile green and Cerulean blue-themed cake.





**Photos from the Alpha Chapter (Cornell University) 2023 induction ceremony and 100<sup>th</sup> anniversary celebration! Photos courtesy Mark Bridgen.**



**Alpha Chapter (Cornell University) Valentine's Day Flower Sale activities (top) and PAX table at the Art in Ag Day at Cornell. Photos courtesy Mark Bridgen.**





**Alpha Chapter (Cornell University) visits the International Bonsai Conference in Rochester, NY.**  
Photos courtesy Mark Bridgen.



The **Iota Chapter** (North Carolina State University) had a full year! Along with our biannual plant sale fundraiser, we began the Will Hembree Memorial Scholarship. The raffle, directed by Ty Seely, was a huge success and the scholarship is off of a great start. We had the honor of initiating 14 new members at our banquet as well.

Officers for the chapter shown in the photo above; President Taylor Hatfield, and Vice Presidents, Ramsey Arram, Tanner Hammerling, and Calyssa Stevenson. Photo provided by Taylor Hatfield.

## Like us on Facebook! Pi Alpha Xi, The National Honor Society



**Pi Alpha Xi, The National Horticulture Honor Society**

188 likes · 191 followers

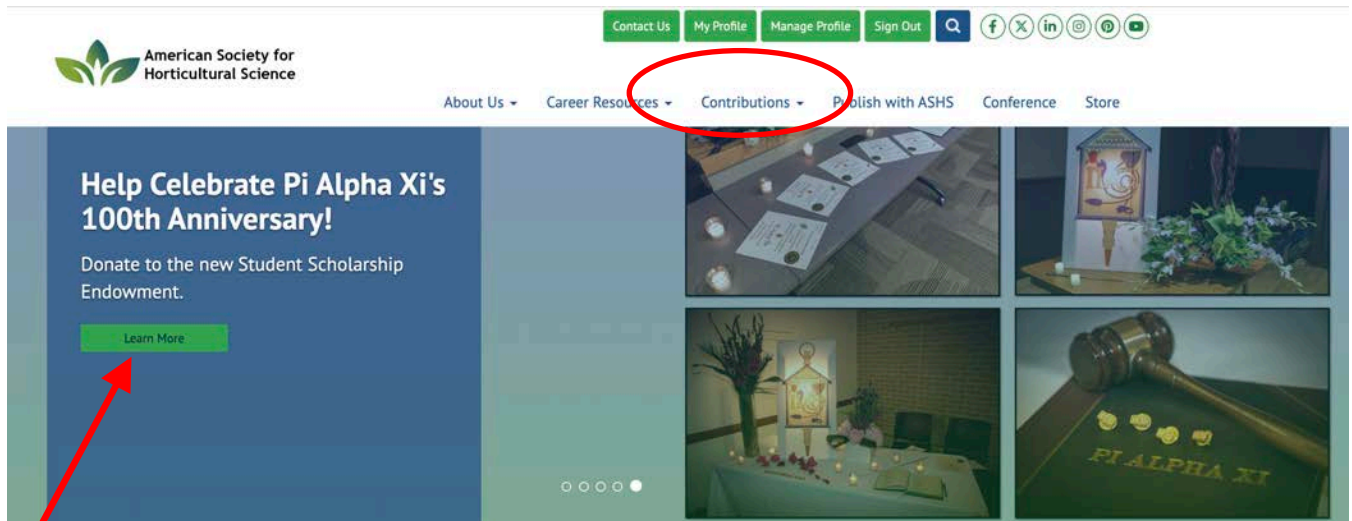


Message

Liked

Search

# NEW!!! Pi Alpha Xi Student Scholarship Endowment



## \$100 for 100 Campaign

“100” is the theme for this campaign, celebrating the 100<sup>th</sup> anniversary of Pi Alpha Xi.

With a very generous \$10,000 donation and a matching \$10,000 donation from Pi Alpha Xi National, we have established this scholarship program! *Thanks to Ellen Paporozzi for all of her continued work with this program.*

These scholarships will be important not only to aid students financially but also reinforce our recognition of excellence in horticulture.

This is embodied by our motto, *Always to Excel.*

The scholarships will be open to all undergraduate and graduate horticulture students *regardless* of a chapter's ability to match funds.

Help grow this endowment to continually support our current and future members, in our 40+ chapters. Here's how you can help...

We ask that all chapters and members please consider donating to the Pi Alpha Xi Endowment fund. As all donors will be listed on our website, a donation can be made in honor of that special professor, colleague, student friend and/or industry colleague!

*It's an easy couple clicks on the ASHS Website...* Under “Contributions” at the top of the page! Or click the “Learn More” tab on the page banner! (see red arrow/circle above!)

# Horticulture Crops Judging Manual Recently Revised



Pi Alpha Xi

## Horticulture Crops Judging Manual



*Prepared by*

**Pi Alpha Xi National**

The National Honor Society for Horticulture

Twelfth Edition – January 2021

**Free to Download at ASHS!**

This is a valuable resource for faculty and educators across the board from high school to higher education. The recently revised edition includes updated judging information, along with the inclusion of judging fruits and vegetables. Over 125 pages of valuable information related to assessing horticulture crop quality!

Go to [www.ashs.org](http://www.ashs.org) and click on “Store” and then click on the Pi Alpha Xi icon, to find the free download!

## Newest Pi Alpha Xi Fellow



Dr. Ellen Paparozzi (retired Chapter advisor Alpha Gamma), left presents Dr. Albrecht, the newest Pi Alpha Xi Fellow (retired, Alpha Beta) with her plaque. Photo courtesy of Chad Miller

Mary Lewnes Albrecht is Professor Emerita of the University of Tennessee at Knoxville (BS 1975 Rutgers University, M.S.1977 and PhD 1980 in Floriculture, The Ohio state University) and current communications director for the East Tennessee Hosta Society.

In 1980, she joined the Department of Horticulture at Kansas State University achieving the rank of Full Professor before she left to lead, as Head, the Department of Ornamental Horticulture and Landscape Design at the university of Tennessee, Knoxville. While at the University of Tennessee, Mary held numerous administrative positions culminating with the position of Associate Vice Provost for Accreditation.

During the course of Mary's horticulture teaching and research career, she has taught undergraduate and graduate courses covering such areas as greenhouse management, floral crop production, herbaceous plant material and foliage plant identification and utilization as well as honors research, thesis and seminar. She has supervised 2 doctoral students, 10 master students, 2 College of Agriculture honors program students, supervised on numerous graduate committees and authored or co-authored 17 journal articles (peer-reviewed), 24 published abstracts, 15 teaching/extension publications, 14 extension service bulletins and 20 popular publication and trade journal articles.

She has received numerous awards and recognitions including the Chancellor's Award for Extraordinary Service to the University of Tennessee, Notable UT Woman, University of Tennessee, Knoxville, Commission for Women, the George Hammel Cook Distinguished Alumni Award (Rutgers University), Gamma Sigma Delta Outstanding Teaching Award of Merit and Teacher Fellow and Outstanding Teacher Award from the National Association of Colleges and Teachers. She served the American Society for Horticultural Science on numerous committees including Chair and Treasurer of the Finance Committee and Education Division Vice President.

In terms of service to Pi Alpha Xi, Mary has served as Chair of the Rules committee (2005-2006 and 2011-2012). She has served on the Fellows Screening Committee (2006-2007 and 2019-2021). She was interim Vice President 2012; President 2012-2014; and Past President 2014-2016. Recently Mary served as editor of the 12<sup>th</sup> Edition of the Judging Manual 2020-2021, and she is currently on the Advisory Board. **Congratulations, Mary! Well deserved!**

## Pi Alpha Xi Fellows

The Pi Alpha Xi Fellows Award is given to PAX members who have achieved marked service or excellence horticulture and/or distinguished themselves with meritorious service to Pi Alpha Xi. The "Guidelines and Procedures for Selection" are detailed in the Pi Alpha Xi Operations Manual (page 25).

### Pi Alpha Xi Fellows

- 2023** Mary Lewnes Albrecht (Zeta 166)
- 2019** Ellen T. Paparozzi Zeta 175)
- 2017** Robert Lyons (Lambda 94)
- 2015** Paul A. Thomas (Sigma 138)
- 2013** David F. Graper (Chi 150)
- 2007** Frank A. Blaxich (Gamma374)
- 2006** P. Allen Hammer (Alpha 427)
- 2003** Douglas C Needham (Omicron 326)
- 2002** Virginia R. Walter (Epsilon 418)
- 2000** Terry L. Ferriss (Chi 12)  
Robert W. Langhans (Zeta 68)
- 1998** Marvin C. Carbonneau (Beta 155)  
John R. Culbert (Beta 72)
- 1995** James E. Klett (Epsilon 394)  
Kenneth C. Sanderson (Alpha 305)  
Dennis J. Wolnick (Gamma323)
- 1994** Lou Berninger (Delta 15)  
Marlin N. Rogers (Alpha 319)
- 1993** Elwood W. "Woody" Kalin (Delta 48)
- 1992** Roy A. Larson (Alpha 339)  
James B. Shanks (Epsilon 70)  
Harold F. Wilkins (Beta 162)
- 1988** (*Charter Class*)  
Lewis Charles "Chad" Chadwick (Alpha 51)  
G.H. "Gus" Poesch (Delta 10)



## MINUTES

**Pi Alpha Xi National  
Annual Business Meeting Agenda  
ASHS Orlando, FL  
August 3, 2023**

***100<sup>th</sup> Anniversary!***

*Chad Miller, Vice President presiding*

12:45 pm - meeting called to order

1. Welcome and introduction of officers given by Chad Miller

Mark Bridgen, President  
Chad Miller, Vice President  
Cole Etheredge, Secretary  
Ryan Contreras, Immediate Past President  
Stephanie Burnett, Past President  
Angie Lower, Executive Secretary/Treasurer (non-voting, ASHS ex-officio)

Advisory Board:

Mary Albrecht, Judging Manual  
Jim DelPrince, Judging Manual  
Richard Harkess  
Sonja Maki, Photography Contest Chair  
Ellen Paparozzi, Endowment

2. Business Meeting

- a. Roll call of chapters – Cole Etheredge
- b. Approval of Financial Report – Angie Lower
  - i. Financial report was given to attendees
  - ii. Current balance \$40,674.54
    1. Question about of cords: there are plenty of cords ordered and available from PAX national
  - iii. Financial report was approved
- c. President's Report – presented by Chad Miller
  - i. Spoke of endowment establishment
    1. 100 for 100 campaign
      - Asking all chapter to donate \$100
      - This will help to promote PAX scholarships

- d. Photography Contest – Sonja Maki
  - i. There were 32 entries
  - ii. There were 5 judges to evaluate the submissions
- e. Old Business
  - i. Update on the Pi Alpha Xi National Endowment – It has been established this year for our 100<sup>th</sup> anniversary. (See the President’s Report for more information.)
    - Each chapter is encouraged to donate \$100 to the new endowment, and individual members are too:
    - Direct link to that page is:  
<http://www.pialphaxi.org/pax-scholarship-endowment-fund.html>
    - *Make a commitment to donate TODAY!*

We need to make people aware of endowment

- Planning on posting link on social media
- The link to the Endowment is hidden on PAX website
  - Angie will check to put it on front page
- Suggest \$15,000 of PAX funds to put into endowment.
- Cole will send out endowment email to all PAX clubs.
- Place announcement in E news announcement to make people aware
  - Chad will take care of this

General discussion on how to make people more aware of PAX and endowment.

- Suggestion: Always include endowment link in Lotus newsletter
- Suggestion: Keep people aware by repetition in emails

- ii. PAX Judging Manual – this can be downloaded for free.
  1. 154 digital downloads over the past year (2022)
  2. It is FREE to download
  3. Suggestion: put information about the Judging Manual in Lotus leaf newsletter.

f. New Business

- i. PAX Fellow Presentation – Ellen Paporozzi
  - Mary Albrecht was awarded the 2023 PAX Fellowship

- ii. National Floriculture Forum 2024 (NFF) update – Jim DelPrince and Christine Co’ker are the organizers.
  - February 22-24, 2024, in Biloxi, Mississippi
  - Theme topic: Sustainability in Floriculture
  - MSU Coastal Research and Extension Center
  - NFF was not held in 2023
  
- iii. Gloeckner Foundation travel grants
  - \$20,000 was given to the NFF to support travel grants for graduate students to attend the NFF.
  - They will be expected to present a brief update about their program at NFF on the final morning. The application process is yet to be determined. Mark Bridgen is chair.
  
- iv. Items from the floor.
  - How will endowment committee be formed
    - a. Let Chad or Cole know that you would like to be on the Committee
  - Let Chad know about any 100 for 100 PAX clubs activities

Meeting Adjourned 1:26pm

**Roster of PAX Chapters**

Those present for the meeting **BOLDED**

**Alpha – Cornell University**  
**Beta – University of Illinois**  
 Gamma – Pennsylvania State University  
 Delta – Michigan State University  
**Epsilon – Ohio State University**  
**Zeta – Rutgers University**  
 Eta – Washington State University  
 Theta – University of Maryland  
 Iota – North Carolina State University  
 Kappa – Virginia Polytechnic & State University  
**Lambda – University of Minnesota**  
 Mu – University of Florida  
 Nu – Auburn University  
 Xi – New Mexico State University  
 Omicron – Purdue University  
 Pi – Clemson University  
 Rho – University of Wisconsin – Madison  
 Sigma – Southern Illinois University  
**Tau – University of Georgia**  
**Upsilon – California Polytechnic State University**  
 Phi – South Dakota State University  
**Chi – Colorado State University**

Psi – Texas A&M University  
**Omega – Kansas State University**  
**Alpha Beta – University of Tennessee**  
 Alpha Gamma – University of Nebraska – Lincoln  
 Alpha Delta – Oklahoma State University  
 Alpha Epsilon – University of California – Davis  
**Alpha Zeta – Univ. of Wisconsin – River Falls**  
 Alpha Eta – Delaware Valley College of Science & Agriculture  
 Alpha Theta – Iowa State University  
 Alpha Iota – Texas Tech University  
**Alpha Kappa – Mississippi State University**  
 Alpha Lambda – Florida A&M University  
 Alpha Mu – Temple University  
 Alpha Nu – Utah State University  
**Alpha Xi – Texas State University – San Marcos**  
 Alpha Omicron – University of Arkansas  
 Alpha Pi – University of Wisconsin – Platteville  
**Alpha Rho – Oregon State University**  
 Alpha Sigma – University of Wyoming  
**Alpha Tau – University of Maine**

# 2023 Pi Alpha Xi Financial Report

## Unaudited Statement of Financial Position As of June 30, 2023

<b>ASSETS</b>	
Current Assets	
Checking/Savings	
Suntrust	\$40,674.54
<b>TOTAL ASSETS</b>	<b>\$40,674.54</b>
<b>LIABILITIES &amp; EQUITY</b>	
Total Current Liabilities	\$ 3,034.31
Equity	
Retained Earnings	\$ 465.70
Temp. Restricted	
Net Assets	\$ 2,000.00
Unrestricted	
Net Assets	\$42,569.41
Net Income	(\$ 7,394.88)
Total Equity	\$37,640.23
<b>TOTAL LIABILITIES &amp; EQUITY</b>	<b>\$40,674.54</b>

## Unaudited Statement of Activities July 1, 2022 through June 30, 2023

<b>INCOME</b>	
Chapter Dues	\$ 750.00
Initiate Dues	\$4,515.00
Judging Manual Sales	\$ 0 (free)
PAX pins, cords, honor cards	\$ 824.00
Photo Entry Fees	\$ 290.00
<b>TOTAL INCOME</b>	<b>\$6,379.00</b>
<b>EXPENSES</b>	
Bank & Credit Card Fees	\$ 160.07
Management Fee (since 7/21)	\$10,030.00
Shingles/Cords	\$2,754.00
Photo Contest Award winners	\$ 195.00
Postage/Shipping/Copying	\$ 334.81
Scholarship	\$ 300.00
Web hosting/Domain Name	\$ 156.00
<b>TOTAL EXPENSES</b>	<b>\$13,773.88</b>
<b>NET INCOME</b>	<b>(\$7,394.88)</b>